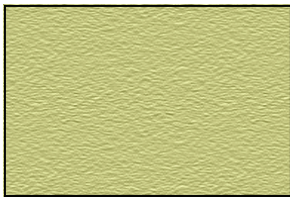


APC PRECISION COUNTERTOP COLORS

APC PRECISION COUNTERTOP COLORS - These colors are specifically formulated to bring your concrete countertops to life with brilliant, vibrant color. All colors are designed to work with gray concrete mix. Custom colors can be created by use of white cement or white/gray mixed cement and experimentation with higher and lower addition rates. Color should be tested in your specific mix to assure final color and customer satisfaction.

COLORS AVAILABLE AND ADDITION RATES AS SHOWN



SUN BUFF - 8%



SIERRA SAND - 5%



AUTUMN - 8%



AMBER - 10%



CARAMEL - 10%



COCOA - 10%



RED ORE - 10%



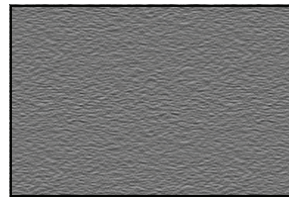
SANGRIA - 8%



FLYER RED - 10%



OLIVE - 8%



QUICKSILVER - 10%



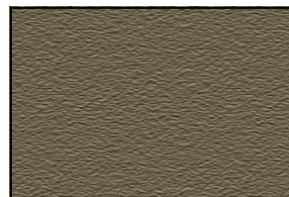
BLACK - 10%



KIWI - 8%



FOREST - 7%



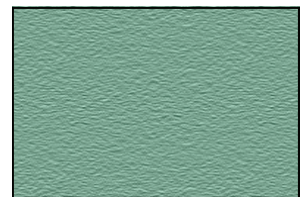
STONE - 6%



MUSTARD - 10%



INDIGO SEA - 10%



SEA FOAM - 5%

APC PRECISION COUNTERTOP COLORS

APC PRECISION COUNTERTOP PACS - Packaging Information

APC COUNTERTOP PACS are 10lb packages of proprietary pigment blends designed for colored concrete countertops, furniture, mantles, and other concrete artisan projects. Each color will be shown in recommended addition rate, but experimentation with different addition rates will provide you with an extremely versatile color palette. Due to the variations in mix designs, APC also recommends that sample pours of each color be made before making specific representations about final color of product.

COUNTERTOP PRODUCTION CHART

Chart shows square footage yield of 10lb Countertop Pac based upon addition rate to cement content in 1.5" and 2" thick countertops.

<u>Addition Rate</u>	<u>Coverage 1.5" Top</u>	<u>Coverage 2" Top</u>	<u>Coverage 2.5" Top</u>	<u>Coverage 3" Top</u>
1%	432 SF	324 SF	259 SF	216 SF
2%	216 SF	162 SF	130 SF	108 SF
3%	144 SF	108 SF	86 SF	72 SF
4%	108 SF	81 SF	65 SF	54 SF
5%	87 SF	65 SF	52 SF	43 SF
6%	72 SF	54 SF	43 SF	36 SF
7%	62 SF	46 SF	37 SF	31 SF
8%	54 SF	41 SF	32 SF	27 SF
9%	48 SF	36 SF	29 SF	24 SF
10%	43 SF	32 SF	26 SF	22 SF
11%	39 SF	29 SF	24 SF	20 SF
12%	36 SF	27 SF	22 SF	18 SF

APC Precision Countertop Colors should be dosed based upon cement content of your batches. If you are using 100lbs of cement in a batch, you would use 5lbs of pigment for a 5% add rate, 6lbs for 6%, etc. Some contractors prefer to use 5000psi bagged mixes. For reference, 60lb bag of 5000psi concrete bagged mix has between 11 and 12lbs of cement content.

*Information above should be used as a general ordering guideline. Independent testing should be done by user to confirm actual usage results.

